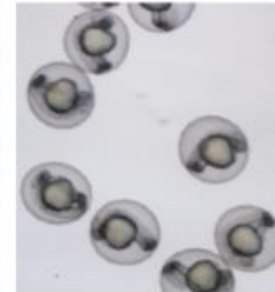


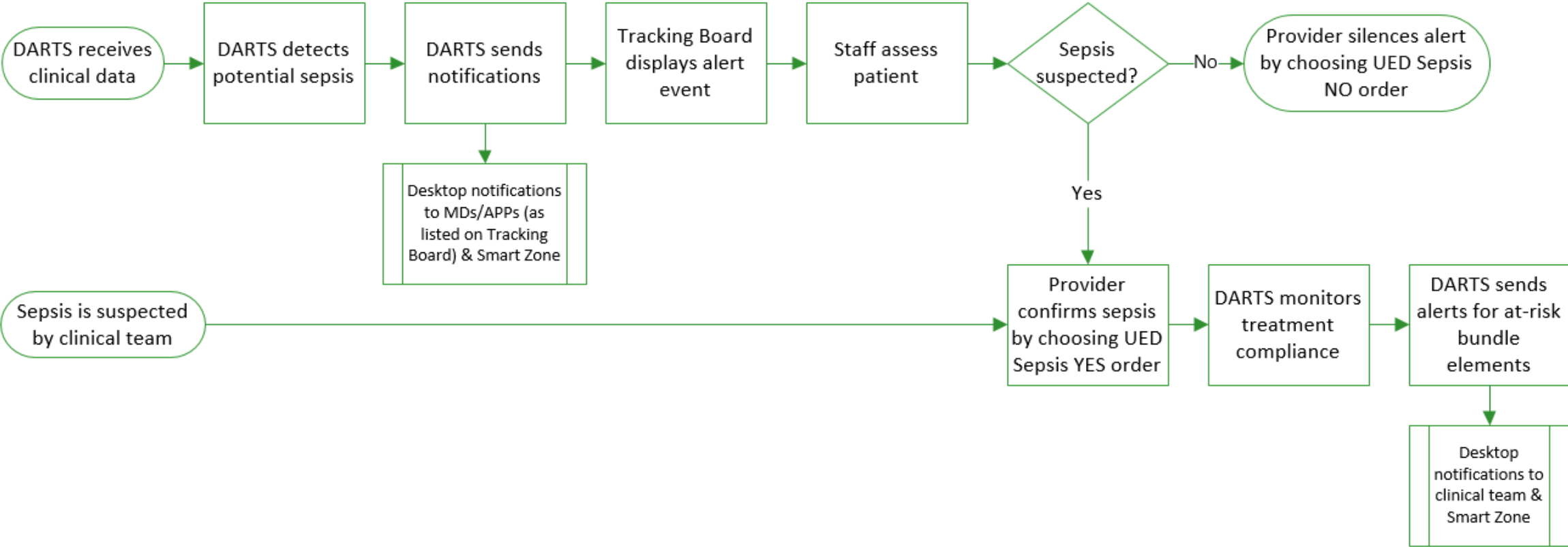
# DARTS – ED

## Detection And Response Tool for Sepsis

**UAB** MEDICINE



# DARTS Process Overview



# Cerner Integration

Color-coded status indicators used throughout the system:



Potential Sepsis



Sepsis Confirmed



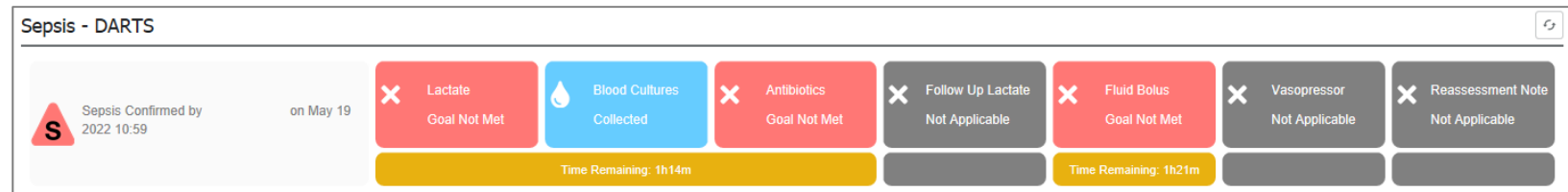
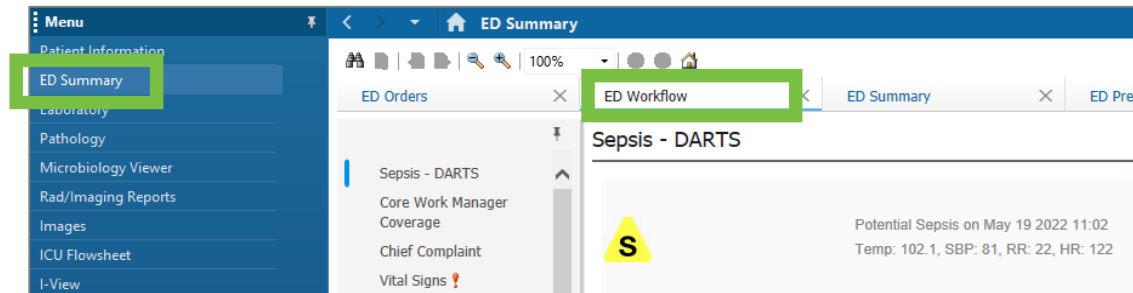
Sepsis Bundle Completed



Sepsis Under Review:  
Alternate Dx-....

Patient details available on the ED Workflow Mpage

- Blue boxes indicate completed bundle elements
- Red boxes indicate needed bundle elements
- Not applicable indicates bundle elements are not required per the Sep-1 guidelines



# Potential Sepsis Detection

# DARTS – Automated Detection Algorithm

- Will mimic current ED alert
  - 2 SIRS + systolic BP or lactic acid within 6 hours (worst documented values)

Data Element	Values	From
Temperature	< 36°C or > 38°C (> 100.4, < 96.8)	SIRS
Respirations or pCO2	≥ 22/min < 32 mmHg	SIRS
Pulse	> 90	SIRS
WBC or WBC Bands	< 4k or > 12k > 10%	SIRS
Systolic BP	≤ 90 mmHg	Organ Dysfunction
Lactate	≥ 3 mmol/L	Organ Dysfunction

# DARTS Automated Notifications

## ED Tracking Board/LaunchPoint

Time	Event
5/19/2022 11:02	Potential Sepsis

<b>Triage</b> UED Sepsis	2	*TRAINING, KAITLIN	fever
	34y F		

Hover over notification will indicate where in the sepsis process the patient is currently (Potential Sepsis, Sepsis Confirmed, Bundle At Risk, Bundle Complete)

## Smart Zone Notifications

**Warning**

Potential Sepsis: Temp: 102.1, SBP: 81, RR: 22, HR: 122

**Warning**

At Risk Bundle Element: Consider Ordering Antibiotics

## Desktop Notifications

**S** ED : TRAINING, KIM  
HR: 122, RR: 22, SBP: 81, Temp: 102.1 F

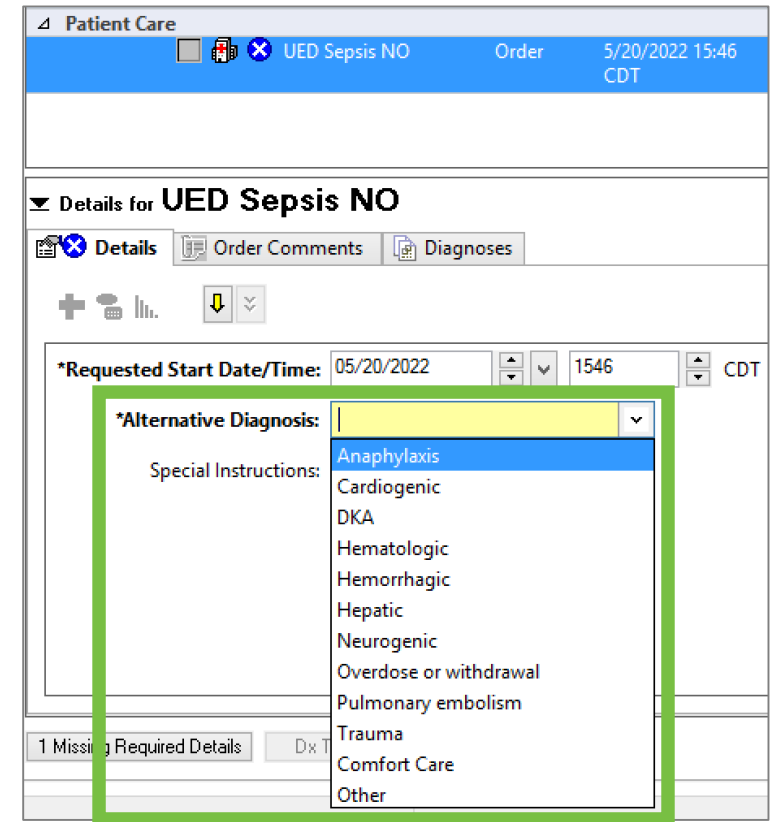
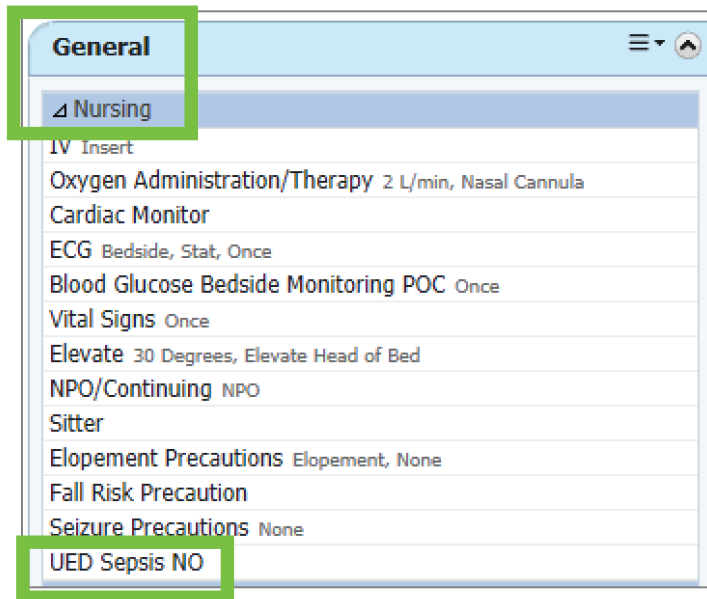
**S** ED : TRAINING, DEANDRE  
Consider Ordering Antibiotics

12:52 PM  
5/19/2022

Hover over colored triangle will provide more details (time of detection, confirmation, etc.)

# Potential Sepsis Provider Workflow

- To confirm: Activate UED Sepsis (UAB Care) powerplan and select “Sepsis YES”
- To dismiss:
  - Select “UED Sepsis NO” order
    - Will be added to UED Quick Orders under General -> Nursing
  - Select an Alternate Diagnosis
    - Any specific diagnosis will silence detection for 12 hours
    - “Other” will silence detection for 6 hours
    - “Comfort Care” will silence detection for the remainder of the visit



# Bundle Element Tracking



# At Risk Bundle Elements

- Alerts for bundle elements will be sent for elements not yet met after detection
  - Elements not considered at risk until at least 1 hour after detection
- When bundle element is collected or administered, Smart Zone notification and desktop notification will be removed
- If desktop notification is closed and bundle element is not addressed, it will re-alert every 30 minutes for a total of 3 notifications

