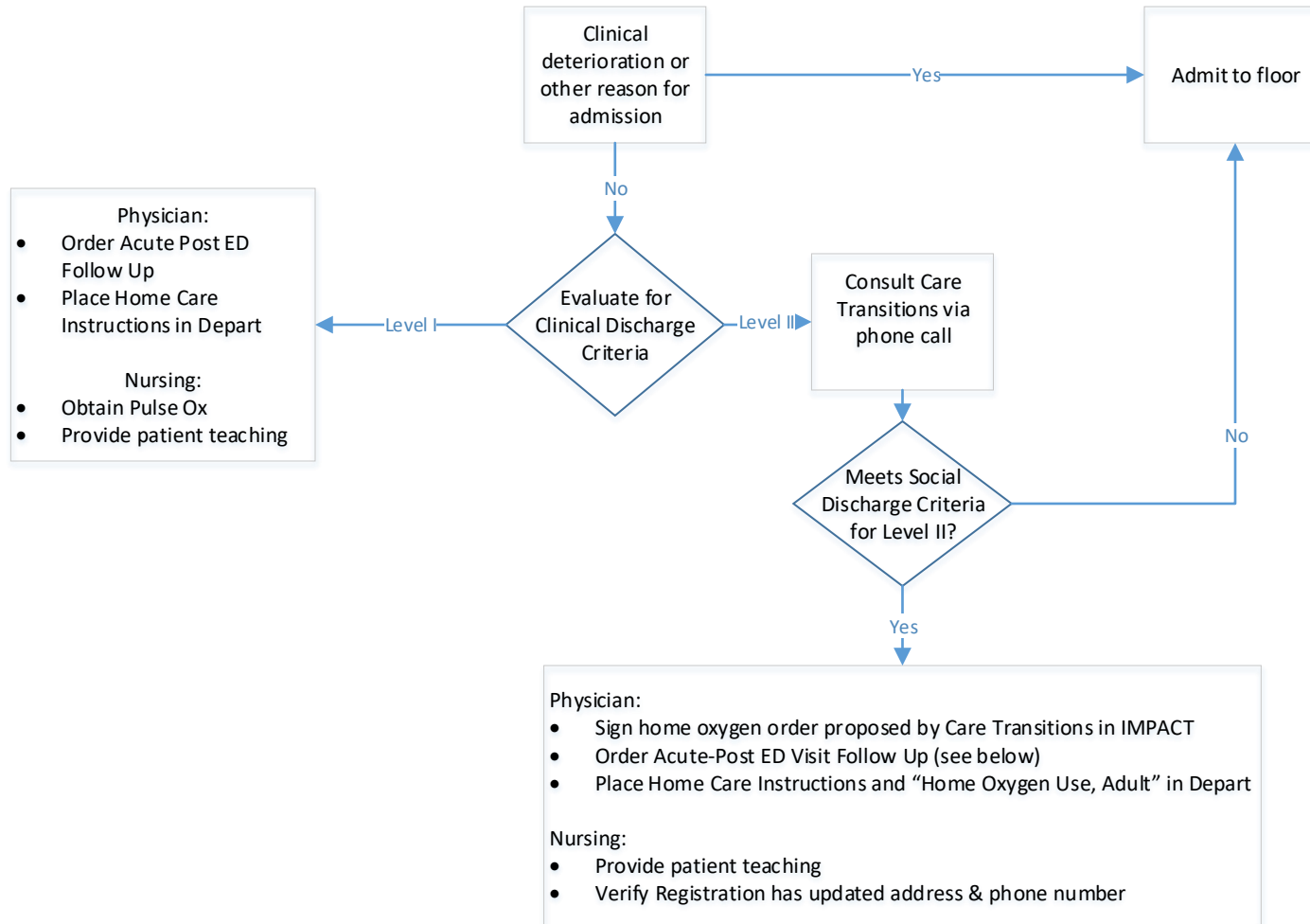


## Emergency Services Home Oxygen Workflow Diagram



<p><b>Admission Criteria</b></p> <ul style="list-style-type: none"> <li>Exertional oxygen saturation &lt;89%</li> </ul>
<p><b>Level I Discharge Criteria (Discharge with Pulse Ox)</b></p> <ul style="list-style-type: none"> <li>Exertional oxygen saturation 92%-95% on room air</li> <li>Able to self isolate and follow up</li> </ul>
<p><b>Level II Discharge Criteria (Discharge with Home Oxygen)</b></p> <ul style="list-style-type: none"> <li>Oxygen saturation ≤ 88% on room air</li> <li>Oxygen saturation 93% or greater on 2L oxygen</li> <li>Confirmed COVID diagnosis</li> <li>Able to self isolate and follow up</li> </ul>
<p><b>Social Criteria</b></p> <ul style="list-style-type: none"> <li>Home oxygen eligibility</li> <li>No learning deficits or cognitive disability</li> <li>Able to self-isolate</li> <li>Access to electricity and phone at home</li> <li>Caregiver/support person</li> </ul>

### Details for Acute Post ED Follow-Up

Details | Order Comments | Diagnoses



\*Specialty for referral: COVID-19 Respiratory Clinic

\*Referral Reason: Home Oxygen

\*Return Priority: 24-48 hours

Preferred Physician for Fo...

Special Instructions: \*\*High Priority\*\* Follow up with Temedicine visit within 12-24 hours and a follow up with COVID-19 Respiratory Clinic within 3-5 days