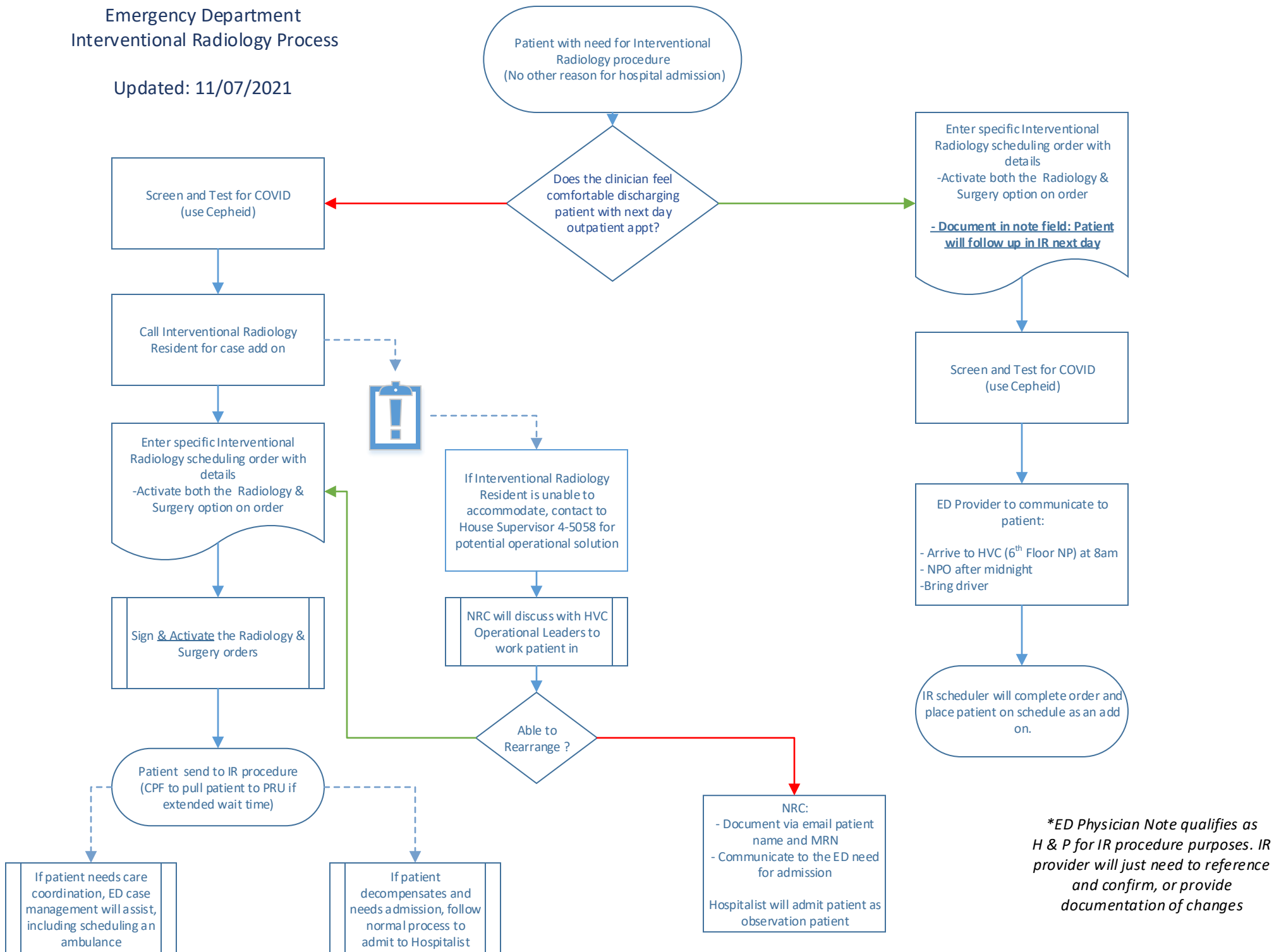


# Emergency Department Interventional Radiology Process

Updated: 11/07/2021



*\*ED Physician Note qualifies as H & P for IR procedure purposes. IR provider will just need to reference and confirm, or provide documentation of changes*

Search:  Starts with  Advanced Options  Type:

Folder:  Search within:

- IR Ablation
- IR Angiogram Cerebral
- IR Angiogram Extremity
- IR Angiogram Pelvis
- IR Angiogram Pulmonary
- IR Angiogram Renal
- IR Angiogram Retroperitoneum
- IR Angiogram Spleen
- IR Angiogram Visceral/GI Bleed
- IR Aortogram
- IR Arterial Angioplasty or Stent
- IR Aspiration
- IR Biliary Catheter Check or Change
- IR Biliary Cholangiogram PTC w Drainage
- IR Biliary Dilation or Stone Extraction
- IR Biliary Stent Placement Internal
- IR Cecostomy Catheter Placement
- IR Central Venous Catheter Check
- IR Central Venous Catheter Placement
- IR Chemoembolization
- IR Chest Tube Placement
- IR Cholecystostomy Placement
- IR Declot Dialysis
- IR Drain Catheter Check or Change
- IR Drain Catheter Check/Change
- IR Drain Catheter Placement
- IR Embolization Bronchial Artery
- IR Embolization Gastrointestinal Bleed
- IR Embolization Malformation
- IR Embolization Pelvic Trauma
- IR Embolization Portal Vein
- IR Embolization Pulmonary Artery
- IR Embolization Renal
- IR Embolization Splenic
- IR Embolization Uterine Artery
- IR Embolization Variceal
- IR Embolization Varicocele
- IR Fistula Creation
- IR Fistulagram Dialysis
- IR Foreign Body Retrieval
- IR Gastrojejunostomy Check or Change
- IR Gastrojejunostomy Placement
- IR Gastrostomy Check or Change
- IR Gastrostomy Placement
- IR Hickman Catheter Placement
- IR Hickman Check or Change
- IR Hickman Removal
- IR IVC Filter Placement
- IR IVC Filter Retrieval
- IR Lumbar Puncture Chemo Injection
- IR Nephrostomy Check or Change
- IR Nephrostomy Placement
- IR Nephrostomy Removal
- IR Nephrostomy w Ureteral Cath for Stone
- IR OR Fluoro
- IR Peritoneal Dialysis Cath CkReposition
- IR Peritoneal Dialysis Cath Placement
- IR Peritoneal Dialysis Cath Removal
- IR Peritoneal Drain Placement Tunneled
- IR PermCath Check or Change
- IR PermCath Placement
- IR PermCath Removal
- IR PICC Exchange
- IR PICC Placement Non-Tunneled
- IR PICC Placement Tunneled
- IR PICC Removal Non-Tunneled
- IR PICC Removal Tunneled
- IR Port Check
- IR Port Placement
- IR Port Removal
- IR Renal Cryoablation
- IR Thrombolysis
- IR TIPS
- IR TIPS Revision
- IR Transjugular Liver Biopsy w Pressures
- IR Unlisted Procedure
- IR Ureteral Stent Exchange Conduit
- IR Ureteral Stent Placement
- IR VasCath Check or Change
- IR VasCath Placement
- IR Venogram Central
- IR Venogram Extremity
- IR Venogram Hepatic Wedges and Manometry
- IR Venous Angioplasty or Stent
- IR Venous Sampling
- IR Vertebroplasty or Kyphoplasty
- IR Y90 Hepatic Radioembolization
- IR Y90 Pre Hepatic Angiogram MAA
- irbesartan
- IRF Physical Therapy Eval and Treat
- irinotecan
- irinotecan IVPB (Camptosar)
- Iron and TIBC
- Iron Dextran (Infed)
- iron dextran baby
- Iron Serum
- Iron Sucrose (Venofer) for One Dose
- iron sucrose IVPB (Venofer)
- iron sucrose study inj
- Irrigate Bladder