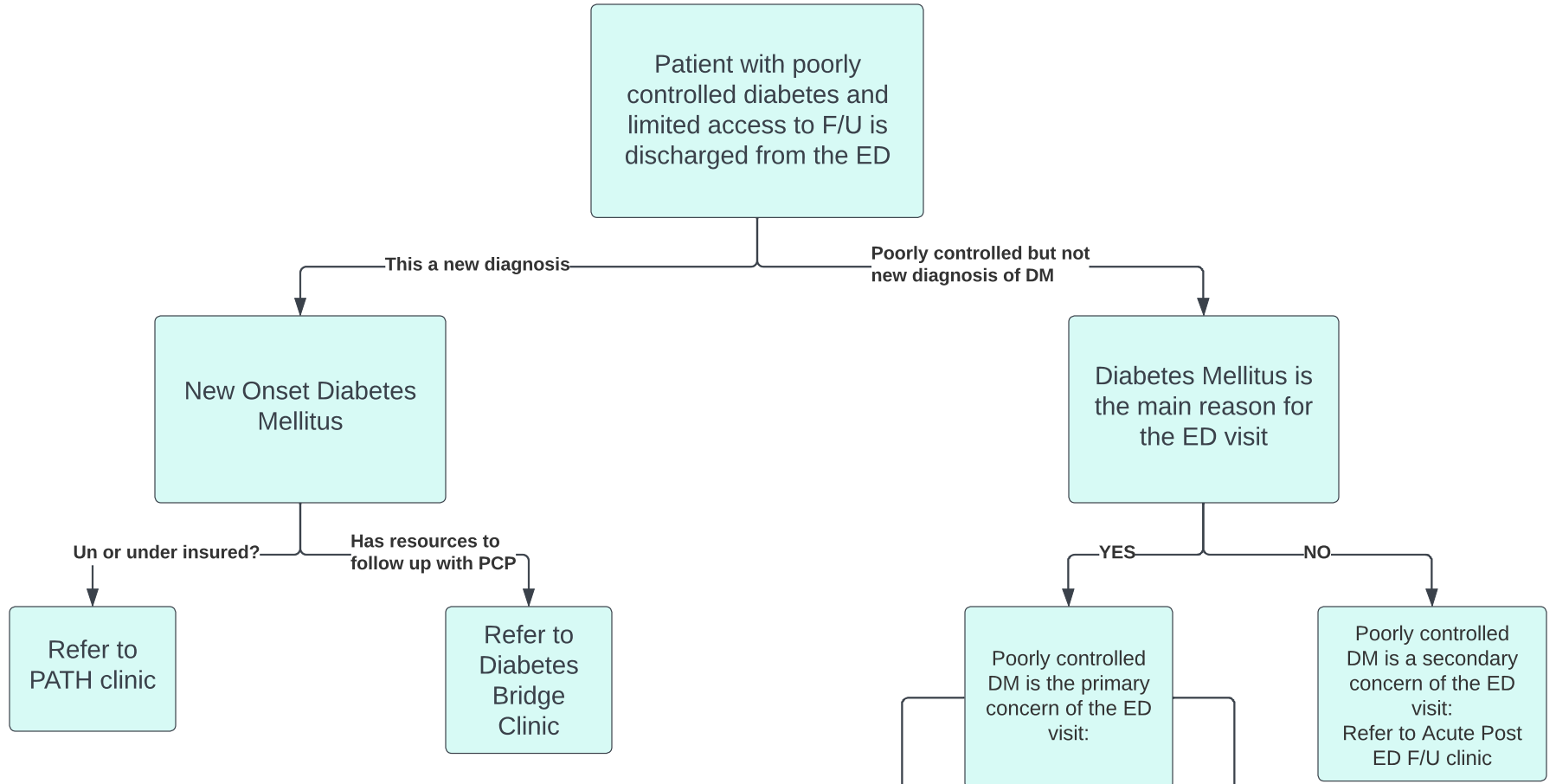


# Diabetes Referral Resource Pathway



**PATH Clinic:**  
 -Clinic run by School of Nursing  
 -Targets uninsured pts with DM type 1 or 2  
 -Aids with supplies, testing equipment, meds  
 -DC instructions with location and services in FirstNet  
 -Criteria: UAB MRN  
 -Require a HbA1C > 9  
 -Referrals: The referral for the PATH clinic is found in IMPACT EMR under AD HOC, Ambulatory, PATH/EAB, Referral, PATH Clinic.

**Acute Post DC Clinic:**  
 -Clinic run by Hospitalists  
 -DC instructions with location and services in FirstNet  
 -Referral order in FirstNet

**Diabetes Bridge Clinic:**  
 -Clinic run by Endocrinology  
 -DC instructions with location and services in FirstNet  
 -Referral order in FirstNet